

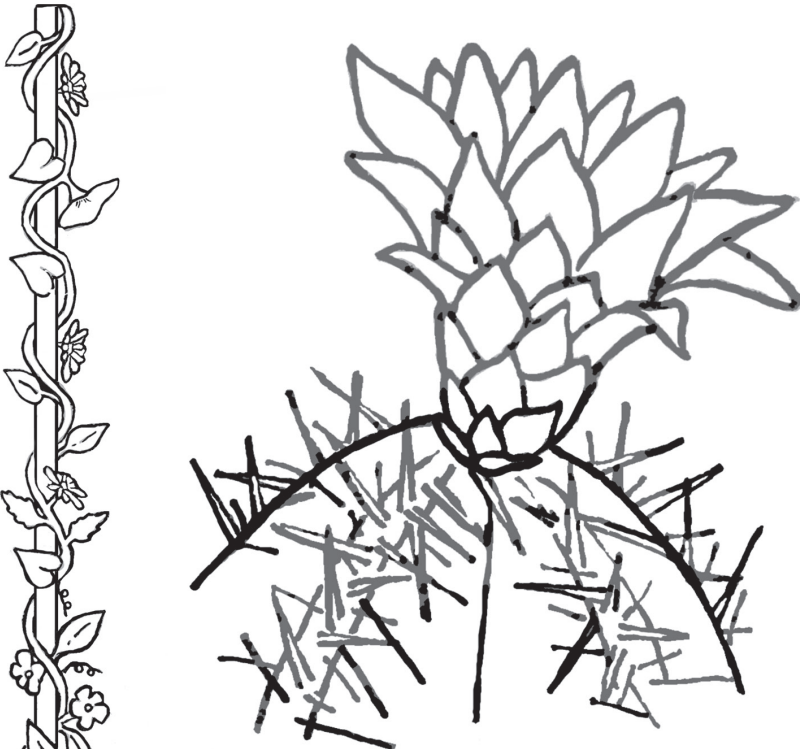


## BAT

I feed on nectar.

I like fruity fragrances.

I am active at night.



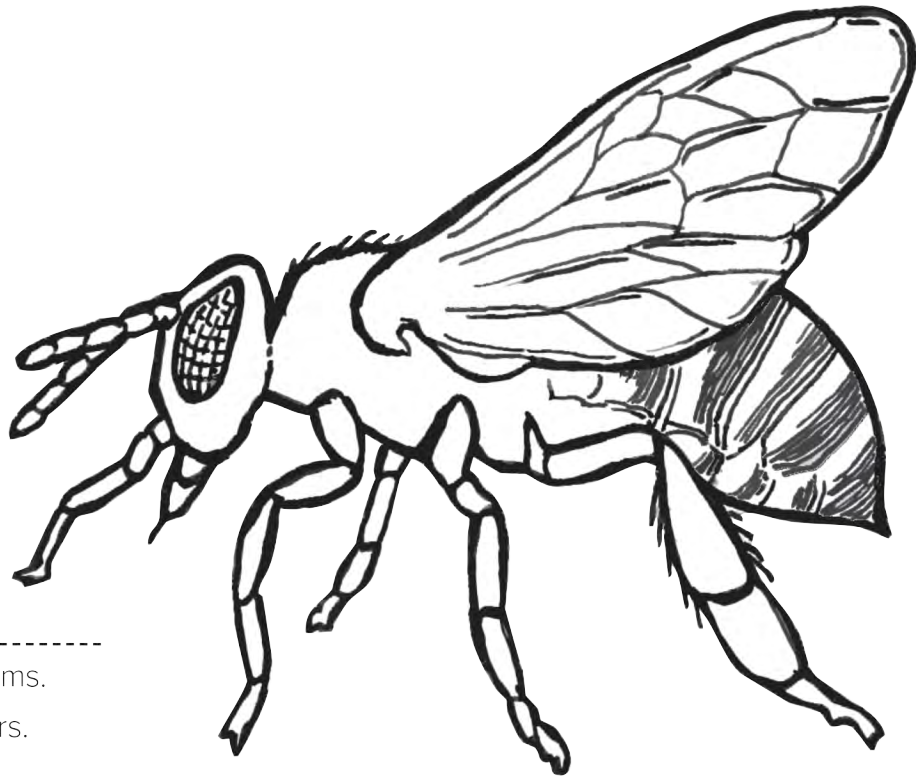
## SAGUARO

I blossom at night.

I have white petals.

I smell like over-ripe melons.

I have lots of nectar to offer.



## BEE

I like sweet-smelling blossoms.

I like clusters of small flowers.

I eat nectar and pollen.

I like having a place to land while I eat.



## SNAPDRAGON

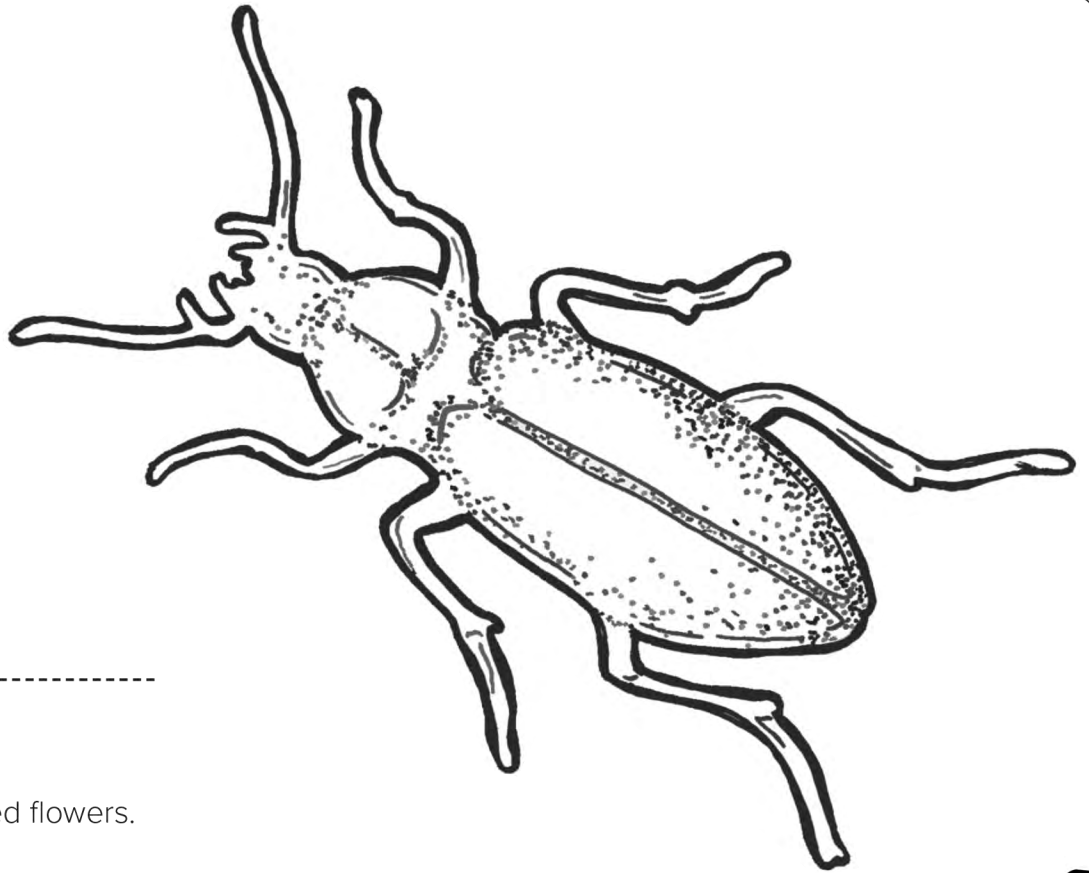
My flowers have handy landing pads.

I smell sweet.

I have lots of small blossoms.

My flowers come in many colors.



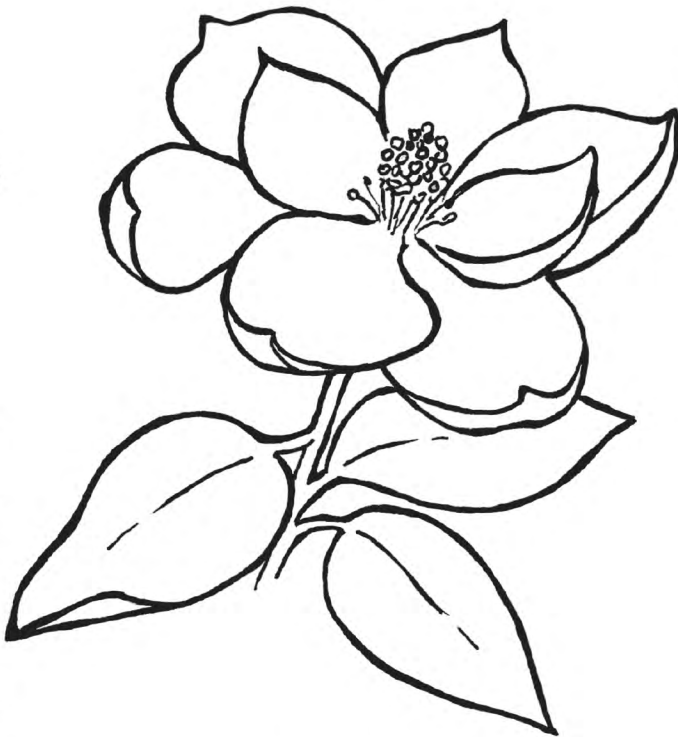


## BEETLE

I eat lots of pollen.

I like white flowers.

I like, open, bowl-shaped flowers.



## MAGNOLIA

I'm bowl-shaped.

My petals are white.

I open during the day.

I have lots of pollen to offer.





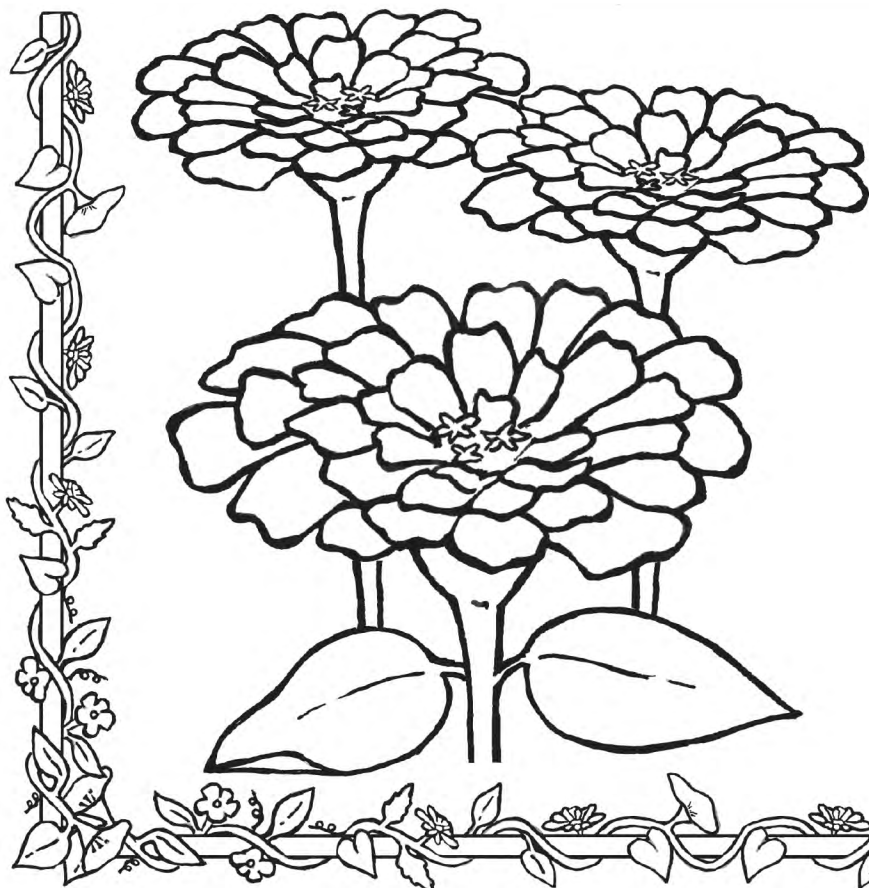


## BUTTERFLY

I'm attracted to bright flowers.

Nectar is my main food.

I need a place to stand while I eat.

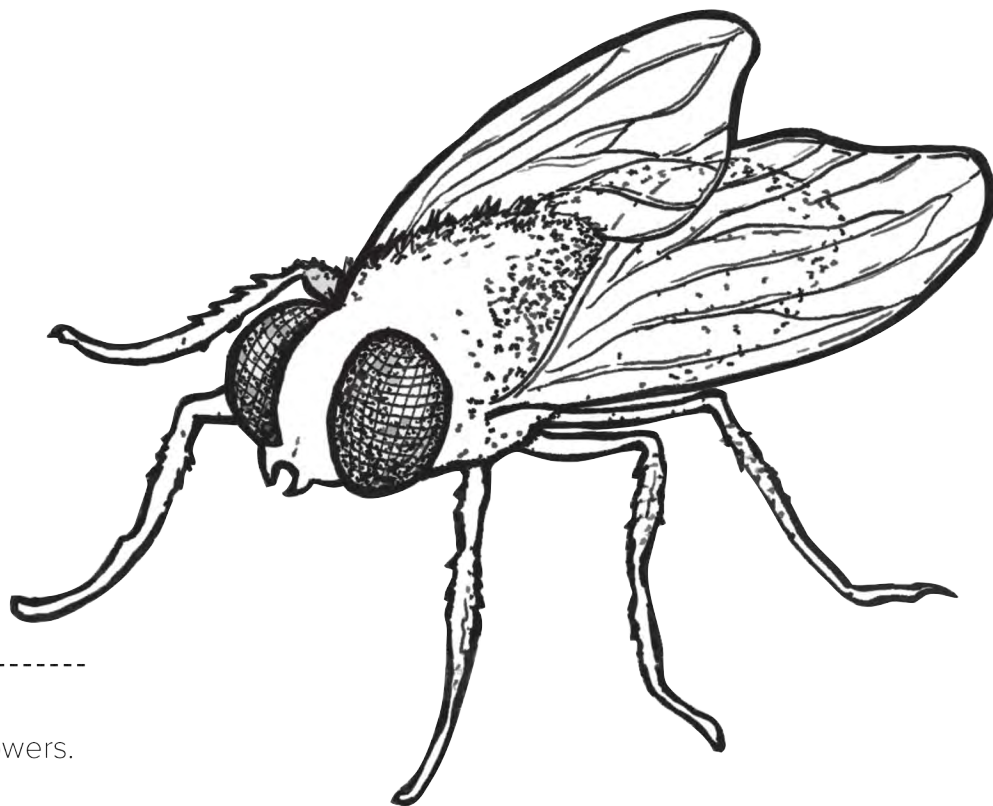


## Zinnia

I have clusters of small flowers.

I have a flat top to stand on.

I come in bright colors such as yellow, red, and orange.



## FLY

---

I eat pollen.

I like dark or pale-colored flowers.

I'm attracted to foul odors.



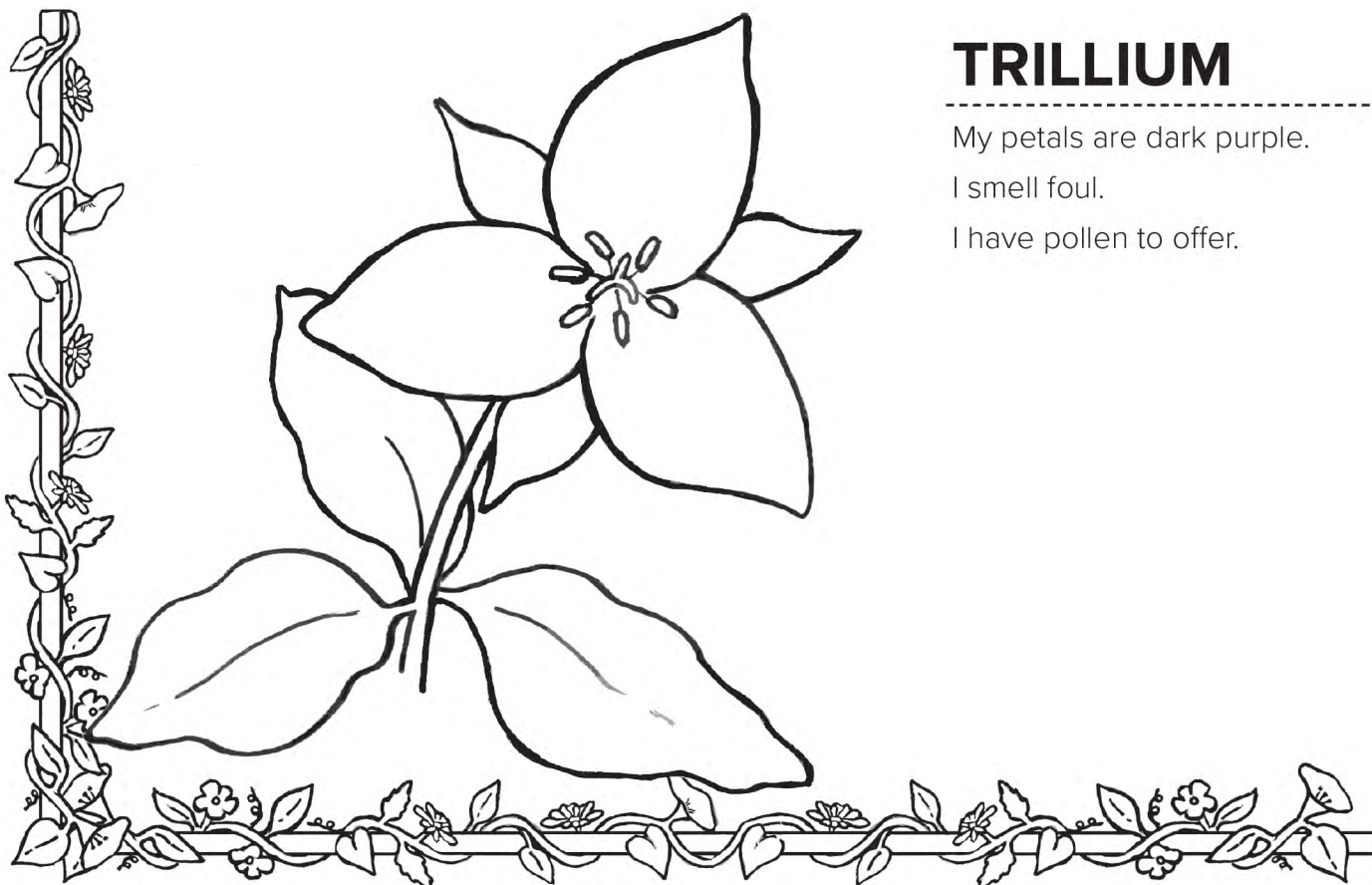
## TRILLIUM

---

My petals are dark purple.

I smell foul.

I have pollen to offer.





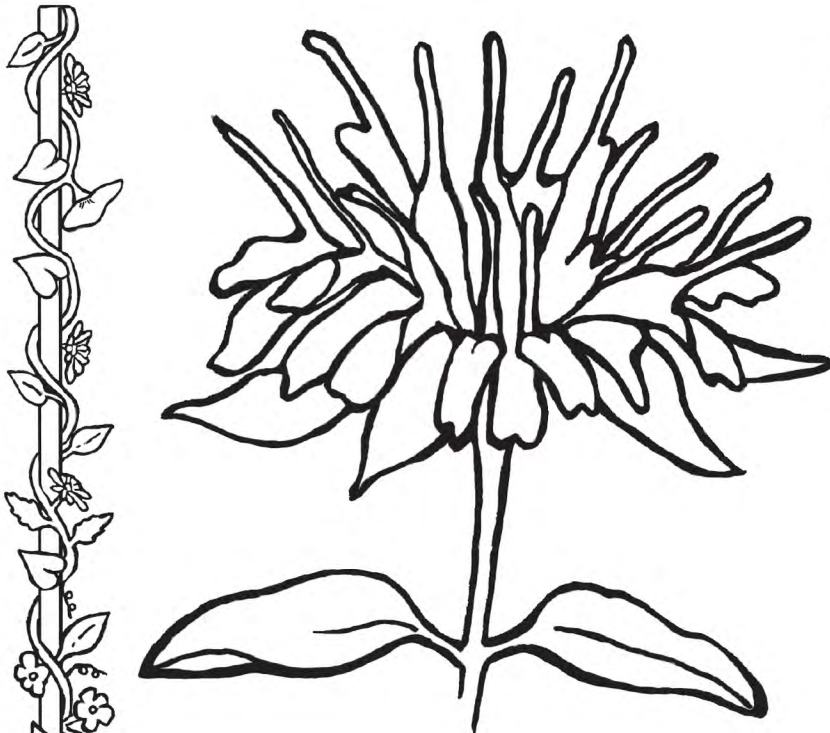
## HUMMINGBIRD

I hover to eat.

My main food is nectar.

I like red and purple flowers.

I'm attracted to tube-shaped flowers.



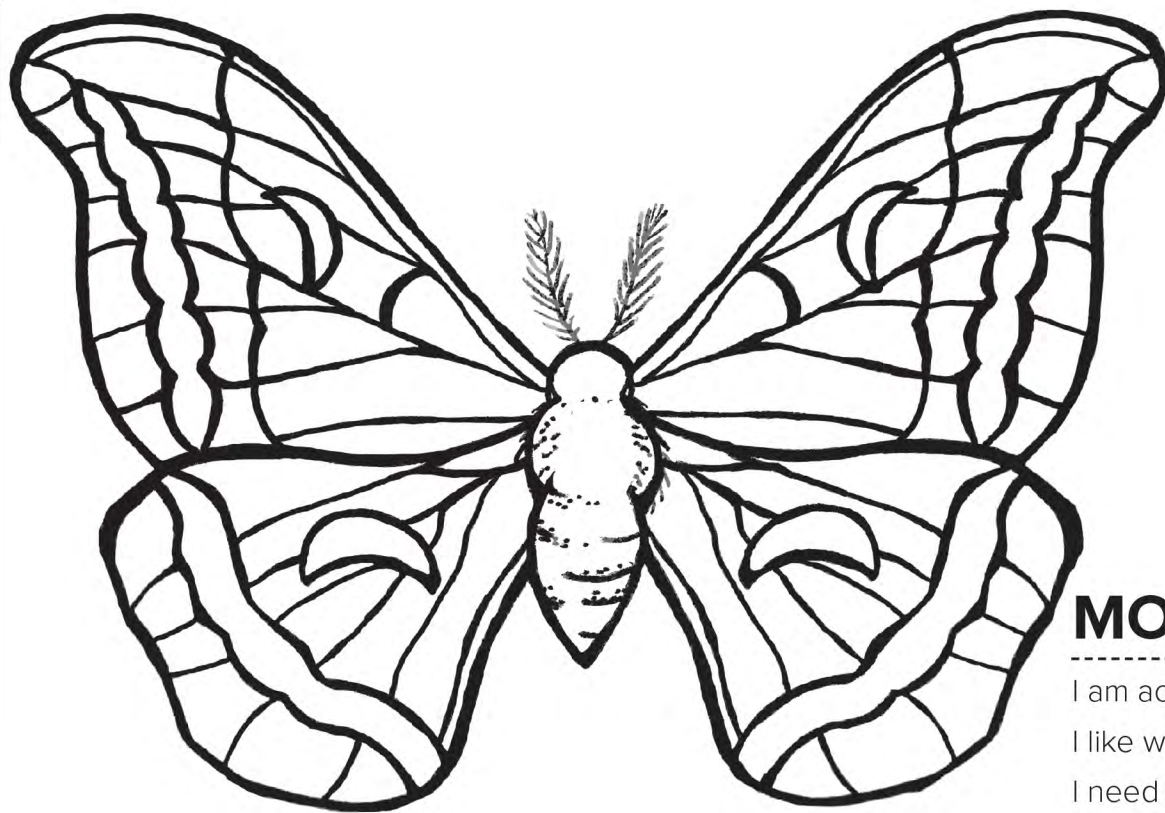
## MONARDA

My petals are tubeshaped.

I have lots of nectar.

My petals are bright red or purple.



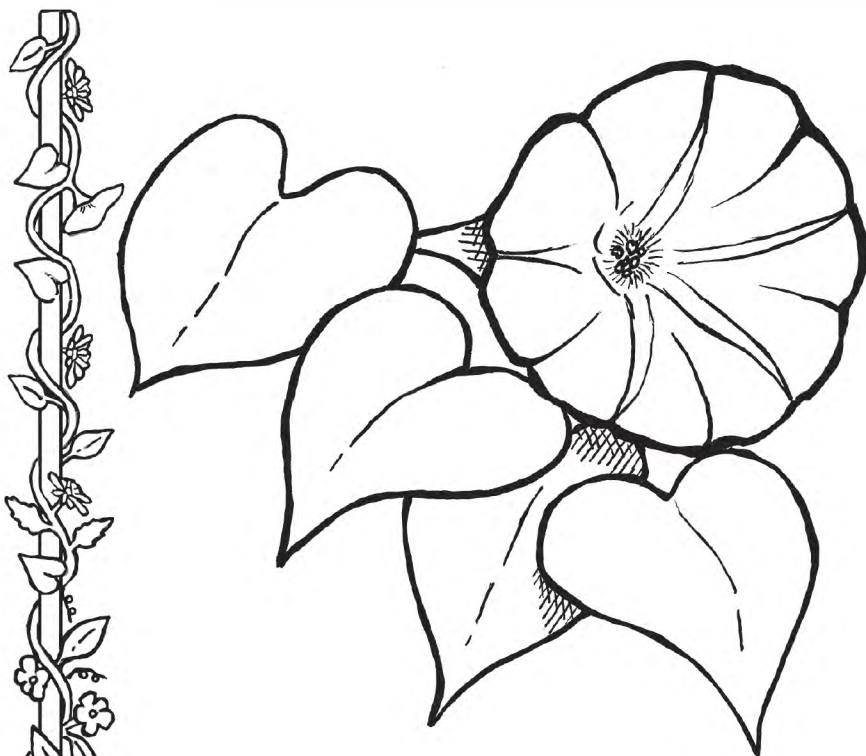


## MOTH

I am active at night.

I like white flowers.

I need lots of nectar.



## MOONFLOWER

My flowers open at night.

My petals are white.

I have nectar to offer.