

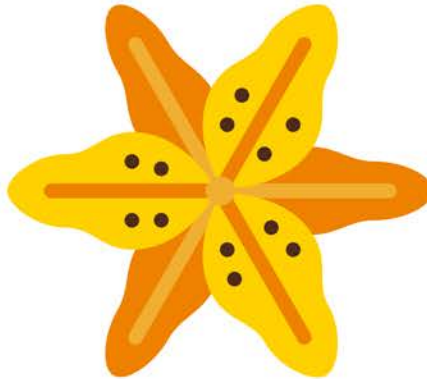
A KEEN GARDEN OBSERVER . . .

- ... notices details.
- ... looks high and low: in flowers, under leaves, on stems, inside fruits.
- ... draws what they see, not what they imagine seeing.
- ... uses all of their senses.
- ... asks: "How is it the same as ___? Different than ___?"
- ... pays attention to shapes, sizes, colors, textures, and smells.
- ... looks for plant/animal interactions.
- ... asks: "What purpose might ___ serve?"
- ... uses tools such as hand lenses, thermometers, and rulers.
- ... finds words to describe what they have seen.



FUN WAYS TO GET STARTED

Some flowers have stripes and other patterns that help insects find the food (nectar) in the flower. Can you find a flower in the garden with patterns on the petals?



Did you know that many garden plants have "seed leaves" (leaves that were already formed and stored in the seed) that nourish the seedling until its "true leaves" emerge? Can you find these seed leaves (cotyledons) on one of your garden plants?

Imagine being locked in an over-crowded room with no food or water! Then you'll understand why plants need to be thinned. Read your seed packet to decide how far apart to plant seeds and thin seedlings.

Did you know that critters of all sizes call your garden home? Look high and low: in the air, on stems, in flowers, beneath leaves, in soil. Who do you find?

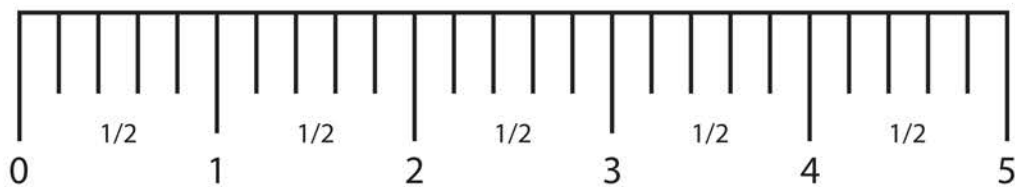
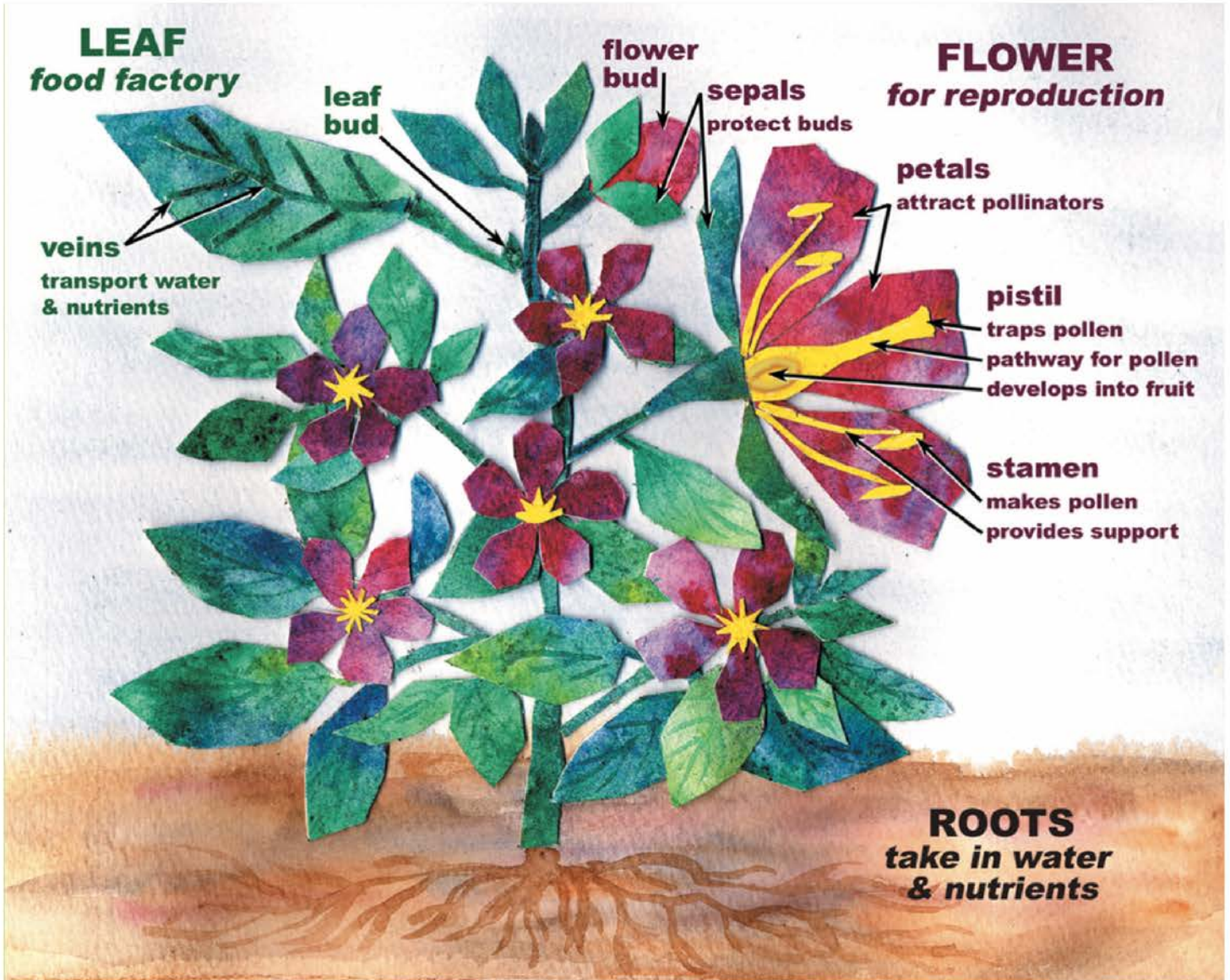
Your finger can help you decide if your plants need water. To test this, stick your finger an inch into the soil near your plant. Is it dry? Give your plants a drink!

Soil is more than it seems; it's teeming with once-living materials, tiny creatures, and different-sized particles. Explore some closely (use a hand lens if you have one), then draw and describe what you discover.



Did you know that seeds, which contain baby plants (embryos), need to take in water before they can sprout (germinate)? Check to see if the soil is moist above the seeds you've planted.

Plant Anatomy



My Gardening Journal

Name:

Location:

Date/Time:

Weather:

Artful Observation: